



Regional Plan Association

Regional Planning in the New York Metropolitan Area

Area Metropolitana de Barcelona International Congress

May 23, 2018

3 states

17 metropolitan planning
organizations

31 counties

783 municipalities

23 million residents

No regional government



RPA writes the region's long-term plans



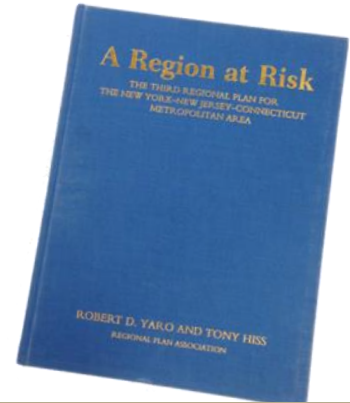
1929

First Regional Plan



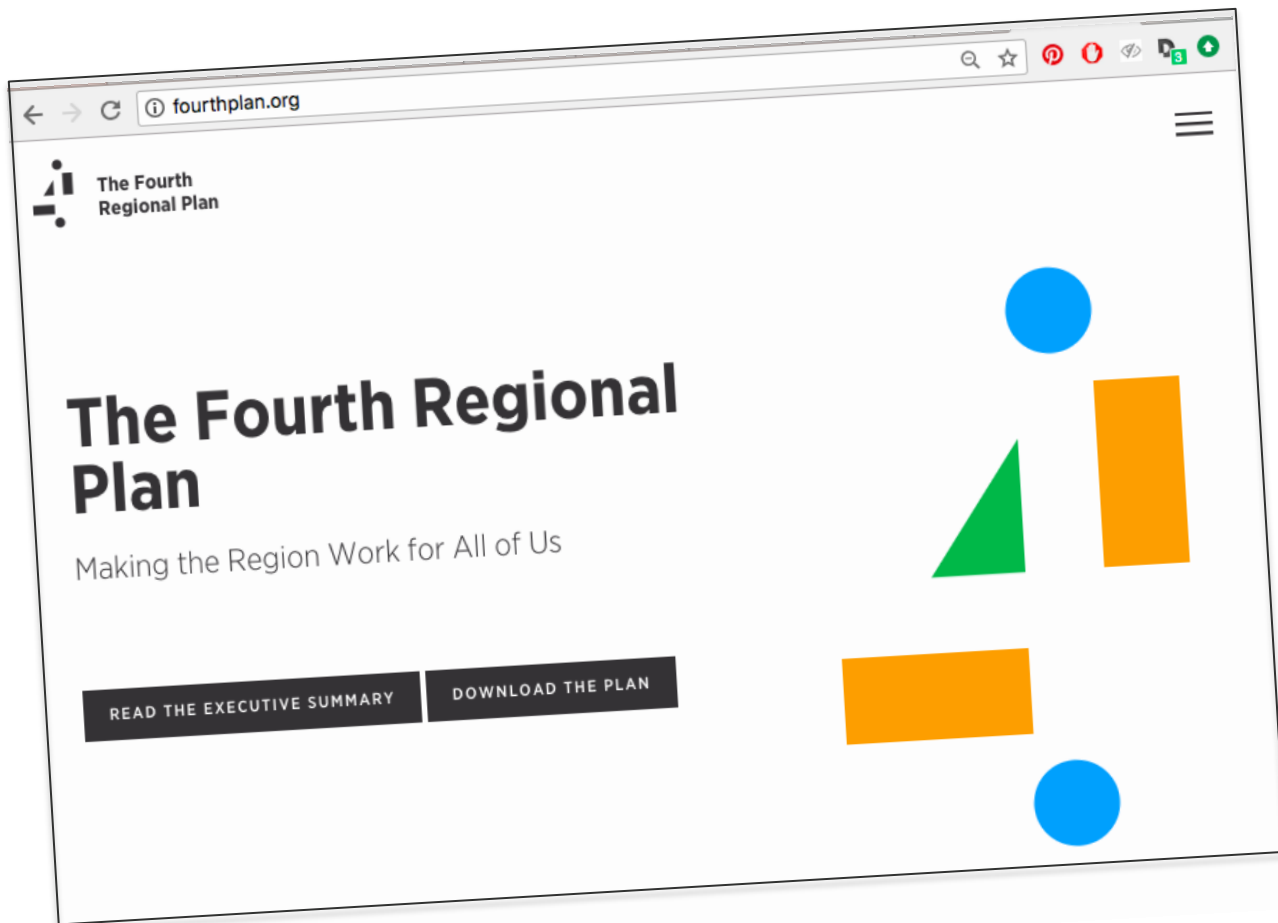
1968

Second Regional Plan



1993

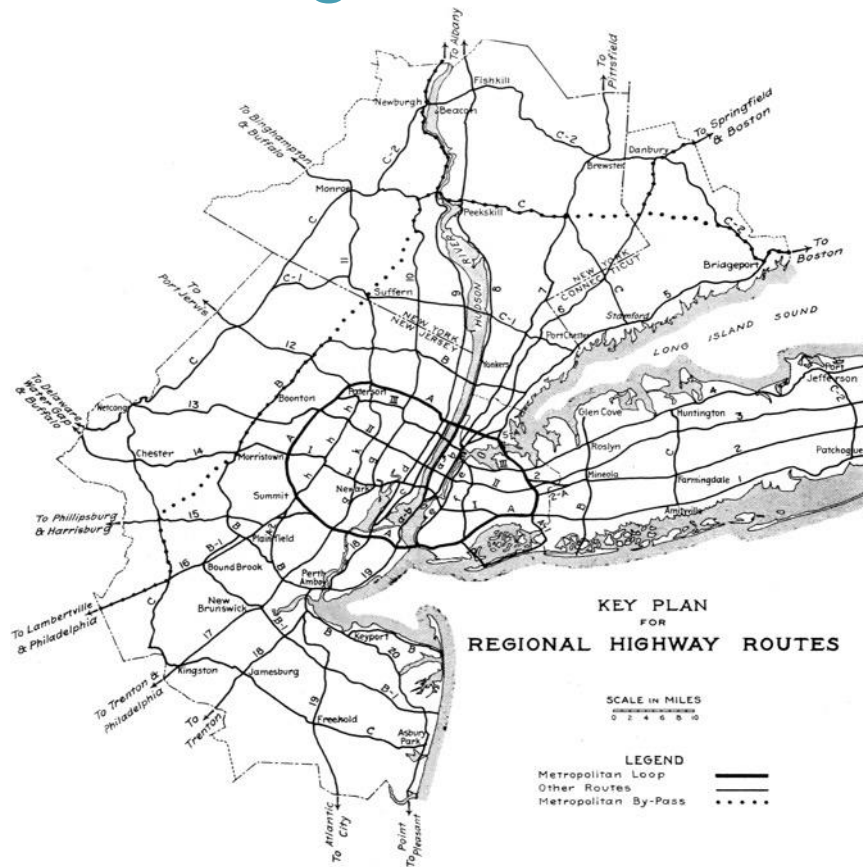
Third Regional Plan



1920s: Massive immigration and very high urban densities



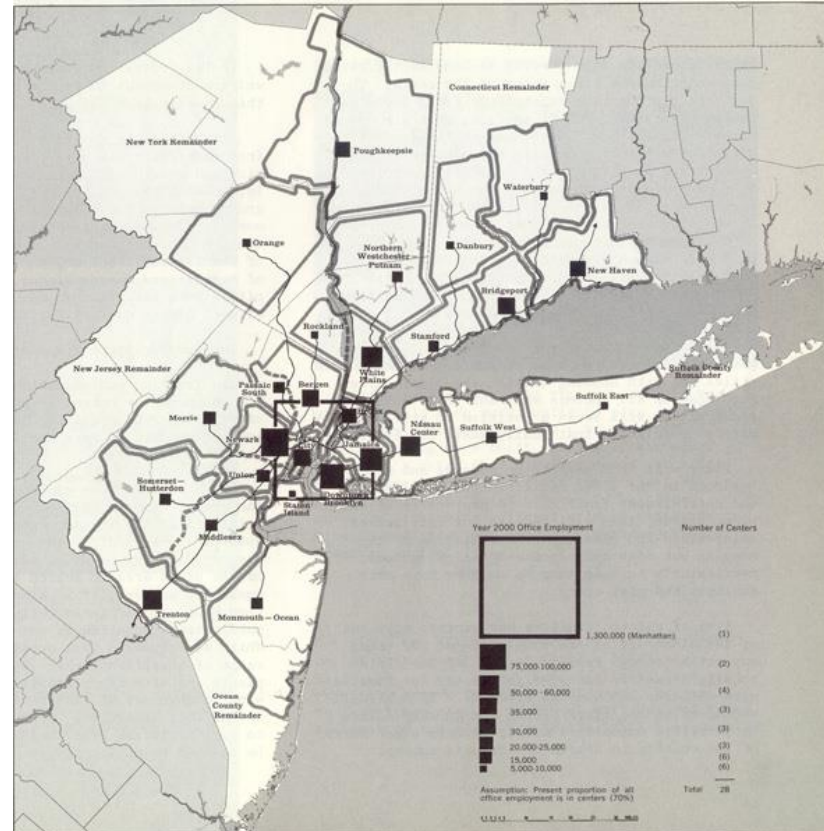
1929: The First Regional Plan



1950-60s: Suburbanization, sprawl and urban decay



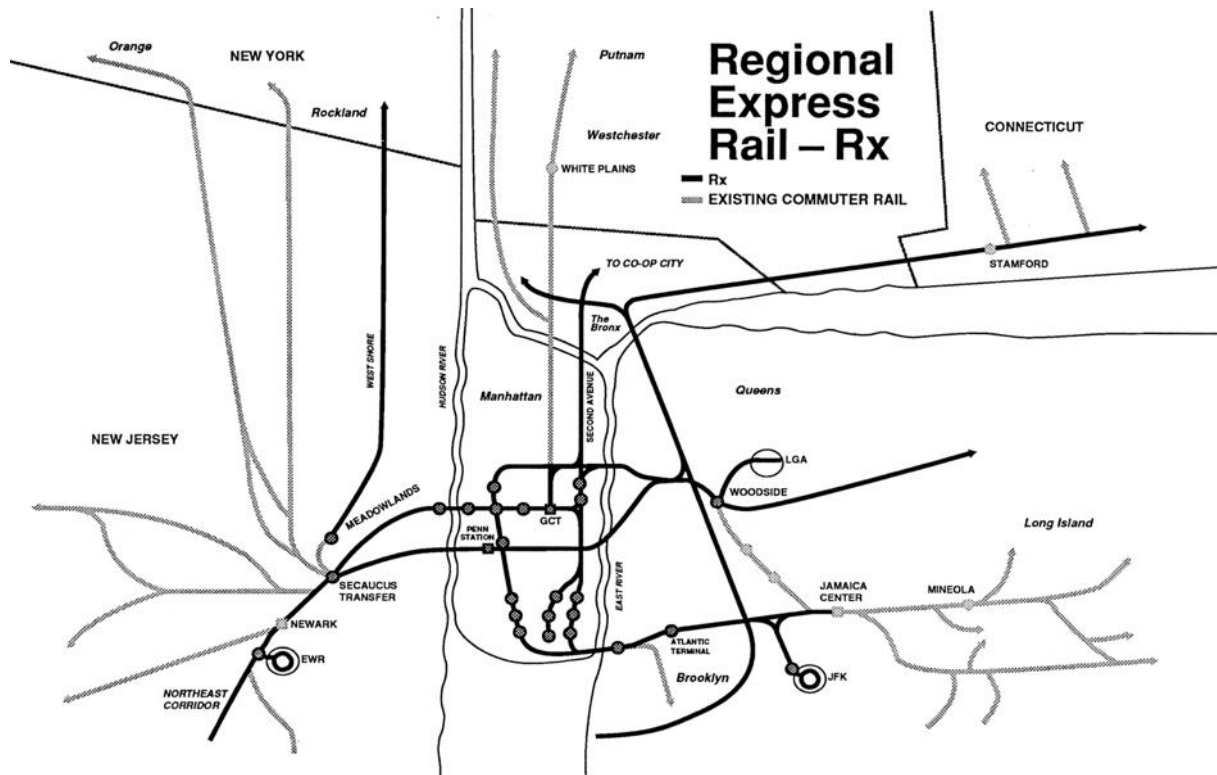
1968: The Second Regional Plan



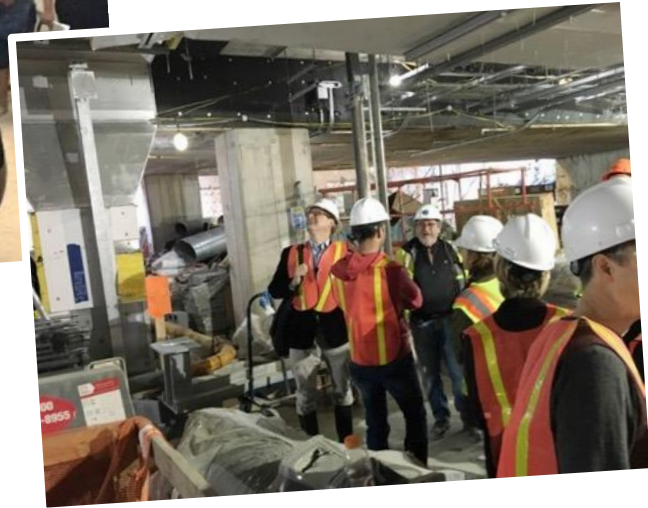
1990s: Post-industrial era, deep financial crisis



1996: The Third Regional Plan



Creating the Fourth Regional Plan by talking to people



2010s: The economy is flourishing, but

- Wealth is extremely unevenly distributed
- Housing prices have skyrocketed
- Transportation has been systematically underinvested in
- Sea-level rise threatens communities and infrastructure
- The public has lost faith in ability of our existing institutions to deliver change

Vision: Create a prosperous, sustainable future for everyone



Equity



Health



Prosperity

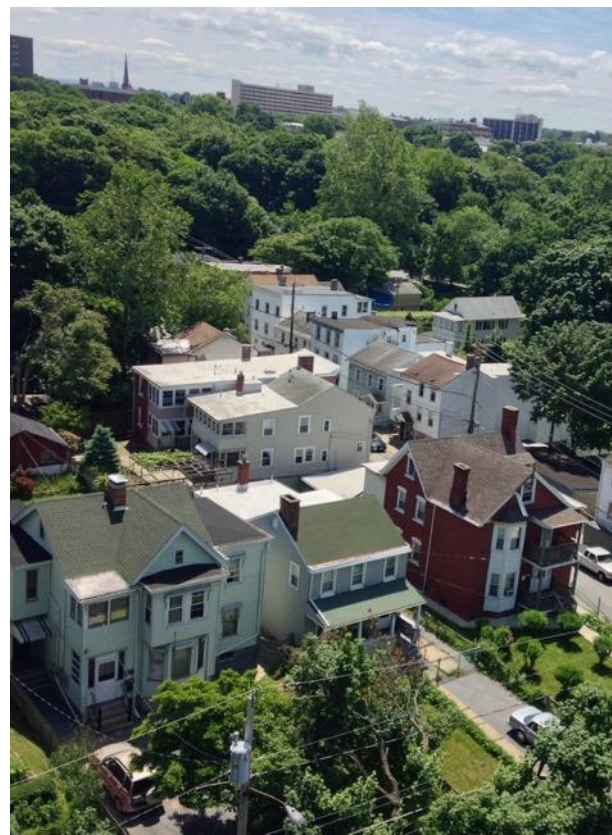


Sustainability

The plan is anchored around four overarching ACTIONS



Make the region affordable for everyone



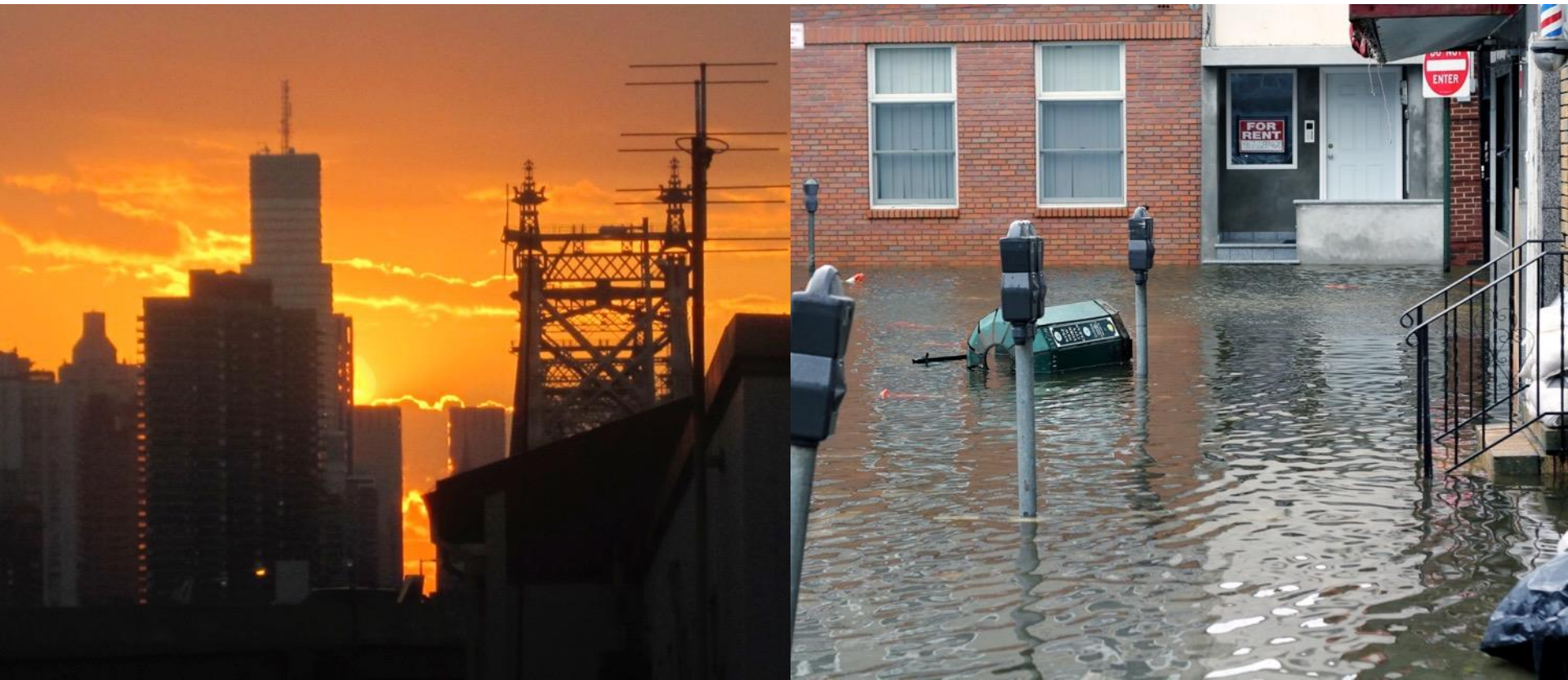
Make the region affordable for everyone

- ➔ Protect residents from displacement
- ➔ Create a million additional new homes (beyond business-as-usual) mostly in transit-accessible locations, and across a range of price points
- ➔ Create well-paying job opportunities throughout the region
- ➔ Turn environmentally burdened neighborhoods into healthy communities





Rise to the challenge of climate change



Rise to the challenge of climate change

- ➔ Protect places where the densities justify it
- ➔ Transition away from lower-density places or places at particularly high risk
- ➔ Create a modern, smarter, greener energy grid





*ORG Permanent Modernity / RPA Fourth Regional Plan

Create a Dynamic, Customer Oriented Transportation System



Create a Dynamic, Customer Oriented Transportation System

- ➔ Totally reconstruct and modernize the subway within 15 years
- ➔ Expand suburban rail capacity and integrate it into a unified network
- ➔ Design streets for people & open up more public space in the urban core
- ➔ Expand and redesign Kennedy and Newark airports to increase capacity

←  Elevators

14
Street

Litter
Stop Here



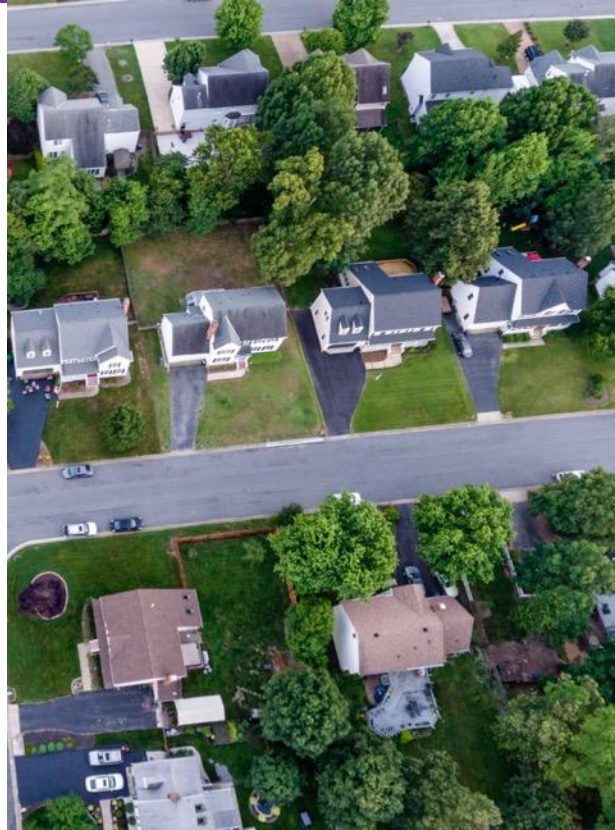
The Best Is
The Most

↑ Exit

Late nights + local
to Far Rockaway
stop here



Fix the institutions that are failing us



Fix the institutions that are failing us

- ➔ Reduce the costs of building new transit projects
- ➔ Put a price on driving
- ➔ Price greenhouse gas emissions
- ➔ Establish a new commission on coastal resilience and raise dedicated funds for it
- ➔ Increase civic engagement and make planning and development more inclusive, predictable and efficient

